

# February Newsletter

## Quote of the Day

*Spread love everywhere you go. Let no one ever come to you without leaving happier.*  
-Mother Teresa

## Upcoming Dates

February 8: Process January reports (K-8)

March 8: Process February reports (K-8)

April 8: Process March reports (K-8)

May: Spring semester payments (9-12)

May 9: Process April reports (K-8)

June 8: Process May reports (K-8)

## Coordinator Spotlight

My name is Cleopatra Trevilcock and I am a product of Seventh-day Adventist Education starting from Bronx Manhattan SDA School in New York. When my family and I moved to Santo Domingo, Dominican Republic to refresh our "Spanish," my siblings and I attended la Academia Metropolitana Adventista. Because I knew the value of Adventist Education, my children also attended Miami Springs SDA School, Greater Miami Adventist Academy and Southern Adventist University.



I have been working with the Partnering for Eternity program as Coordinator since GMAA joined this wonderful program back in 2017. I have been the Development Director at GMAA since 2009 and was always looking for opportunities to assist our GMAA Family with their financial needs. When a representative from Southern Adventist University presented this mentorship program to me, I was thrilled and presented it to our Business Manager. We then met with the Principal who was all for the program. I especially appreciate that it not only helps our families with their financial needs but that it provides an opportunity for mentors to

share their life experiences. Students are developing and maturing so much and the mentors feel so honored. There is also bonding between both families and spiritual growth as well.



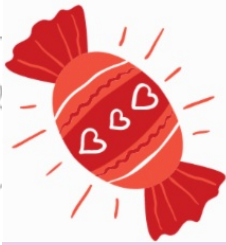
# Fall 2021 Totals

*Scholarship Total: \$528,265.29*

*Participating Schools: 150*

*Participating Students: 1,141*

*Visit Hours: 18,870*



## Activity Suggestion - Heart Symmetry Painting

### Materials Needed

Sturdy paper

2 or more colors of paint

Paint brush or spoon

### Instructions

1. Cut out paper hearts of different sizes
2. Use a paintbrush or spoon to add drops of paint to one side of the paper heart
3. Carefully fold the second half of the heart paper over the paint and press. Squish the paint sandwich all over with your hands.
4. Open up the heart to reveal your interesting and unique symmetrical art!



Participate in the activity suggestion this month? Send a picture of you and your mentor with your heart symmetry paintings to [pfe@sffcfoundation.org](mailto:pfe@sffcfoundation.org) and you will be

entered to a win prize!

We need some volunteers who speak Spanish and can help us translate PFE materials.

I speak Spanish and would love to help! Sign me up!

I speak Spanish but just don't have enough time to help right now.

I don't speak Spanish, but I wish I could help!

#### Reminders

- Virtual visits are discontinued (includes letter writing, text, Zoom, etc.)
- Send us your stories and pictures!



SFFC Foundation | 1040 Avondale Road, Hendersonville, TN 37075

[Unsubscribe pfe@sffcfoundation.org](mailto:pfe@sffcfoundation.org)

[Update Profile](#) | [About Constant Contact](#)

Sent by [pfe@sffcfoundation.org](mailto:pfe@sffcfoundation.org) in collaboration  
with



Try email marketing for free today!